



# **Catawba Islander Trail & Greenway**

## **Catawba Islander Trail & Greenway Master Plan**

**Public Open House, Wednesday October 26, 2022**

**Park District of Ottawa County**



# Introductions

- Park District of Ottawa County
  - Jannah Wilson, Executive Director
  - Gary Kohli, Mike Shadoan, Betsy Slotnick, Jack Madison, and Judy Indorf, Board of Park Commissioners
- Poggemeyer Design Group (PDG), A Kleinfelder Company
  - Tim Bock, P.E.
  - Harper Cromley, E.I, S.I
  - Lauren Falcone, AICP

# Catawba Islander & Greenway Master Plan

- Park District is working with PDG to prepare a Master Plan to determine the preferred alternatives for a multi-use path on Catawba Island



## Master Plan will focus on

- Looking at...
  - Available right-of-way
  - Bicycle & pedestrian safety issues
  - Drainage & utilities
  - Existing demographics
  - Future projections
  - Connections to points of interest
- Including...
  - Review of existing site conditions
  - Review of potential route options
  - Potential trail head locations
  - Preliminary cost estimates & conceptual maps
  - Potential funding options
  - Plan for determination of preferred route



# Catawba Island Trail & Greenway

- Proposed multi-use trail from the north end to the south end of Catawba Island
  - Approximately 5-7 miles of multi-use trail
  - Dedicated multi-use trail to provide a clean, safe, and scenic route for pedestrians
  - Potential uses include walking, cycling, running, roller blading, strollers, mobility wheelchairs, snowshoeing, and cross-country skiing
  - Pet-friendly
  - No motorized vehicles
  - A wildlife corridor with trail landscape as green infrastructure



# Ottawa County Active Transportation Plan

- Worked with diverse Steering Committee to identify gaps and barriers in the transportation system and then specific strategies and actions to increase future opportunities for active transportation
- Plan was adopted on 11/1/18
- Plan outlined need for transportation alternatives throughout Ottawa County, including multi-use trails.

# Catawba Island Township Land Use Plan



## Goals

1. Preserve land areas that are unique (natural or manmade) that foster/maintain sense of identity/individuality
2. Maintain the recreational and commercial facilities needed to serve the projected population
3. Continue to keep like land uses together
4. Develop and/or improve transportation facilities to ensure efficient and safe movement within township

# Survey Monkey Data

- Survey will be open until Nov 11<sup>th</sup>
- Majority are year-round residents (82%)
- Majority are 65 & Older (45%)
- Majority from zip code 43452 (92%)
- Majority have experienced Catawba Island Community Parks
- 44% do not use other Ottawa County trails, 40% use on-road designated lane on NE Catawba Road (Rt. 53) on Catawba Island



## Catawba Islander Trail & Greenway

### Hello Catawba Island Township Residents, We Want to Hear From You!

The Park District of Ottawa County has been working to plan safe recreational amenities for walking, running, biking, kayaking, fishing, and enjoying nature. The District has retained Poggemeyer Design Group, Inc. to work with them to complete a Catawba Islander Trail & Greenway Master Plan. Check out the web address and QR Code below to access a ten-minute survey. This survey will be utilized to determine preferred options for a multi-use trail from the north end of Catawba Island to the south end of Catawba Island, approximately 5 miles, to be completed in phases. As a part of the planning process, the Park District would like to hear your opinion through this survey and also at our Open House on October 26th. Please take ten minutes to complete the survey and provide your feedback. [https://www.surveymonkey.com/r/Catawba\\_Islander](https://www.surveymonkey.com/r/Catawba_Islander)



W E D N E S D A Y  
**October 26th**  
2 0 2 2  
**6:00–8:00 pm**

### W H A T PUBLIC OPEN HOUSE

W H E R E  
Catawba Island Township  
Community Hall  
3307 NW Catawba Rd  
Port Clinton, Ohio 43452

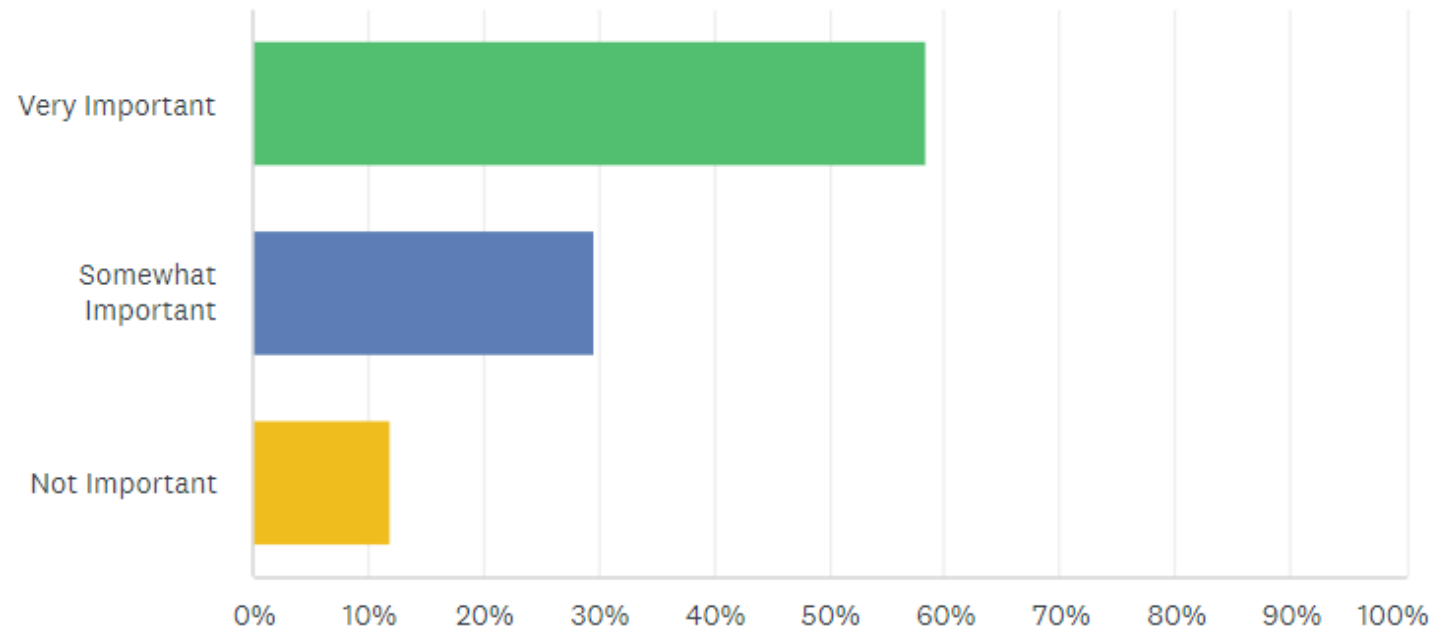
Refreshments will be served and there will be a brief presentation by our consultants from 6:45-7 pm.

We hope you can join us to share your opinions and ideas.



## How important are trails and greenspace to your quality of life?

Answered: 368   Skipped: 1



The Park District of Ottawa County is working to preserve land and natural habitats for safe connections for pedestrians and cyclists through the county, including greenway trails. What type of trail/greenway would you like to see to connect Catawba Island? Please check all that apply.

Answered: 353   Skipped: 16

ANSWER CHOICES	RESPONSES	
▼ Enhanced along SR 53, either within or outside the right of way	32.58%	115
▼ On Public Right of Way	14.45%	51
▼ On an Easement as a greenway	42.21%	149
▼ A Blend of All	38.53%	136
▼ No Build	16.15%	57
▼ Other (please specify)	Responses 9.07%	32

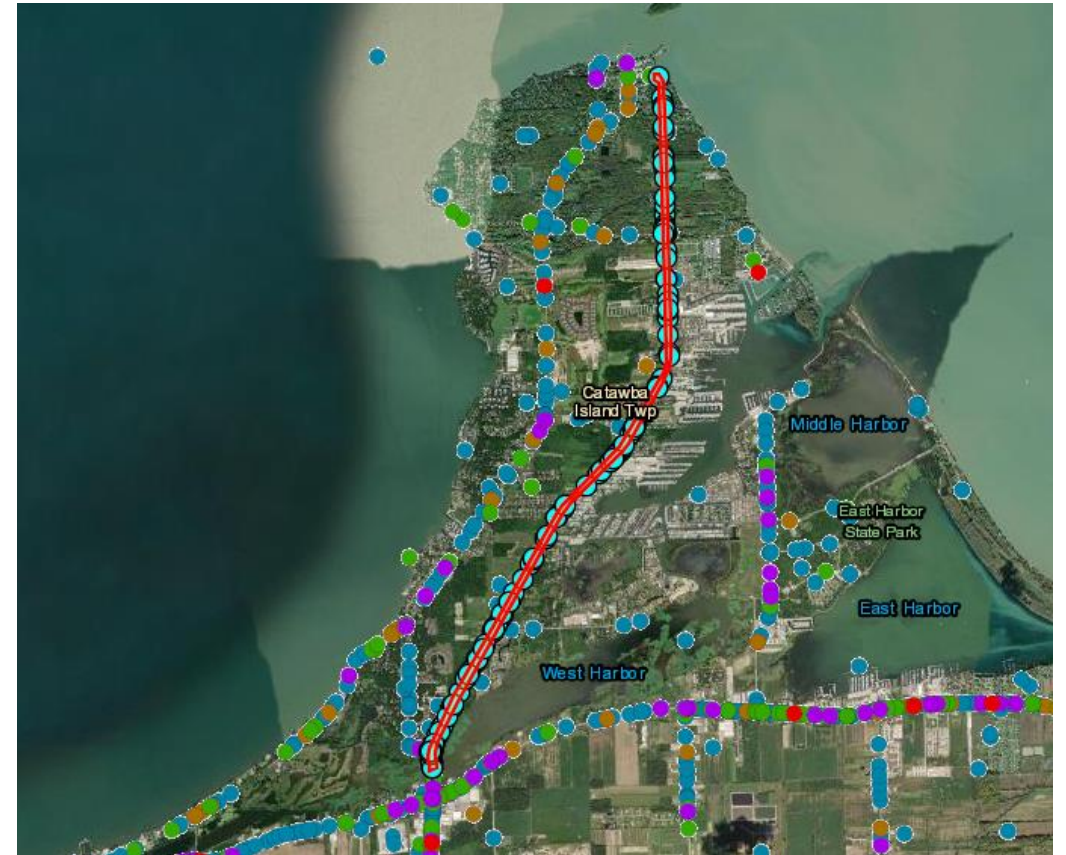


## Survey Monkey Data

- Using a few times a month, seasonally, and a few times a week
- Spending 30-60 minutes on the trails
- Safety and environmental/natural habitat exhibits would encourage them to make longer trips on the trails
- Walking/hiking, biking, nature walks, and pet walking on the trails
- Want restrooms, benches, trash and recycling cans, wildlife/scenic observation areas, and drinking fountains/water bottle refill stations on the trails

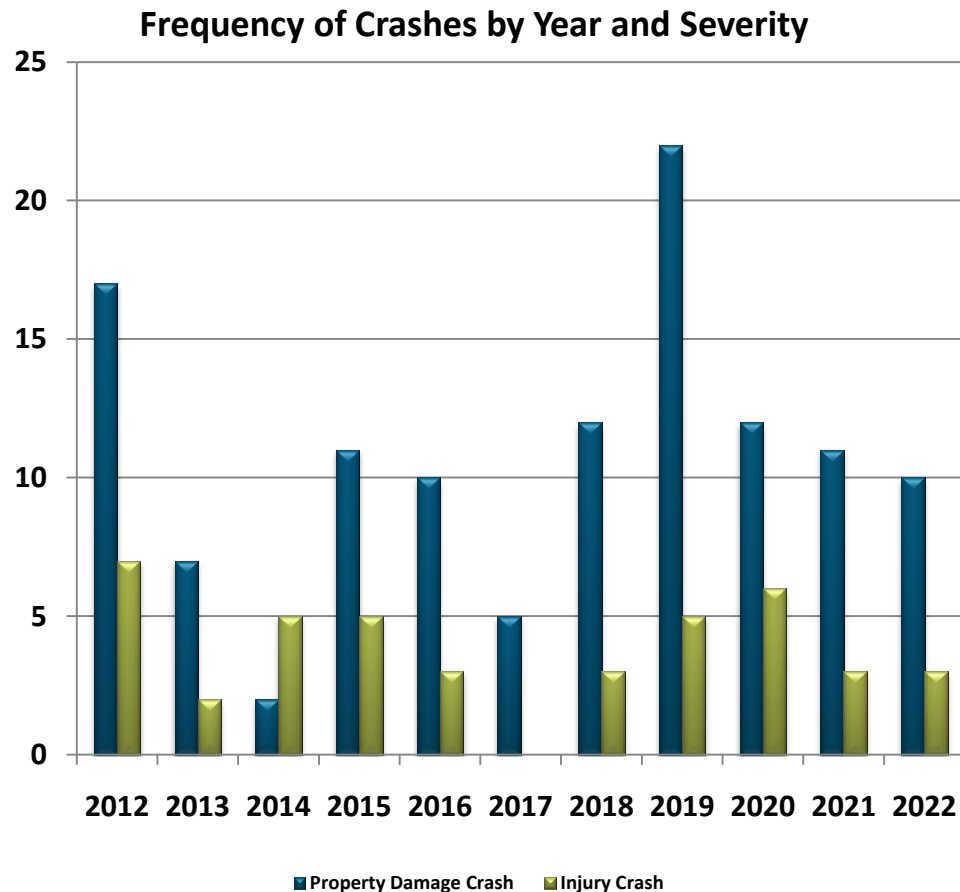
# Crash Data 2012-2022

- ODOT crash data 2012-2022
  - Data is based on reported crashes using ODOT's GIS crash analysis tool (GCAT)
  - 10-year analysis performed for greater accuracy to show overall trends
  - Note that 2022 data is incomplete, data includes up to October 2022
  - Analyzed crashes along SR-53 from midpoint of causeway to Sloan Street



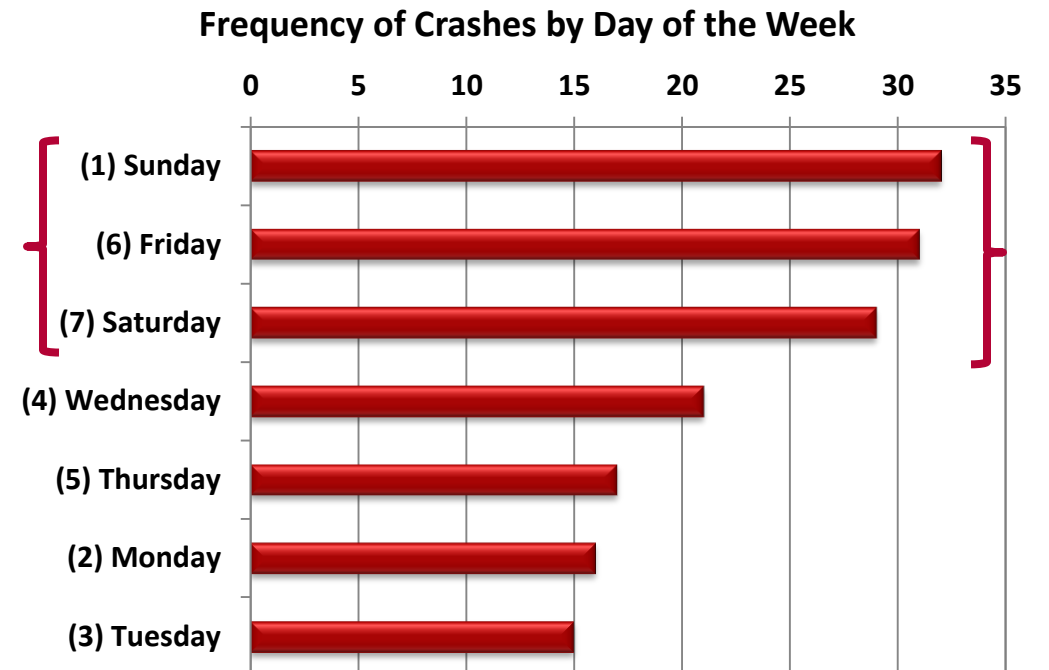
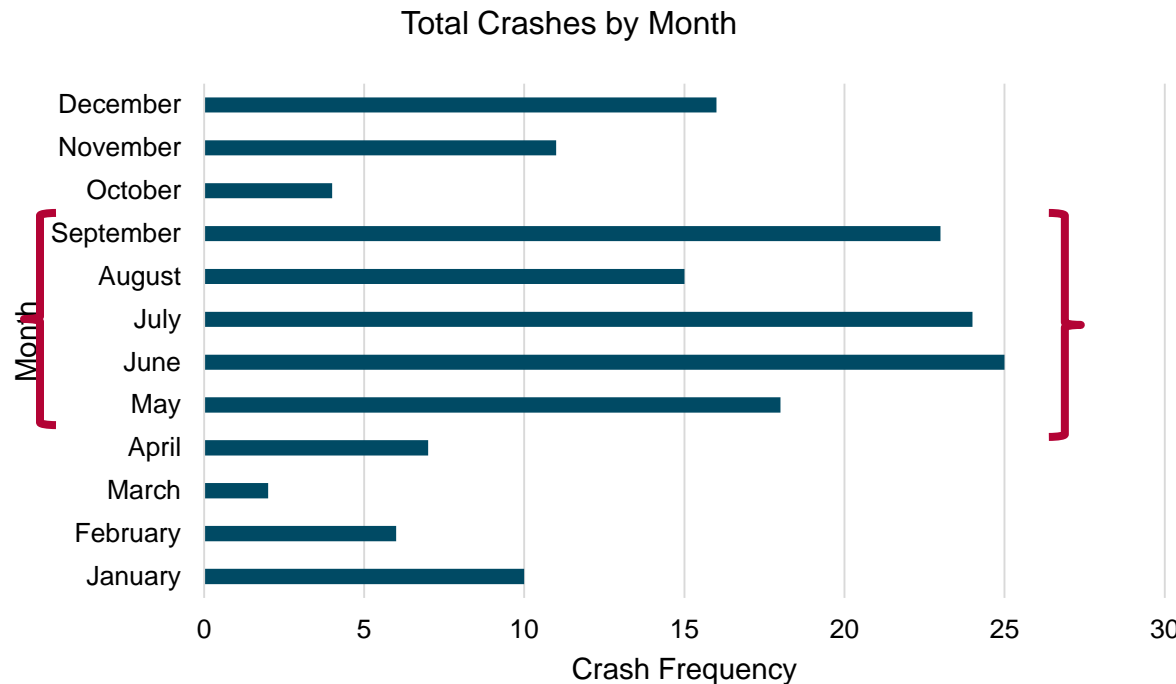


# Crashes by Year (2012-2022)

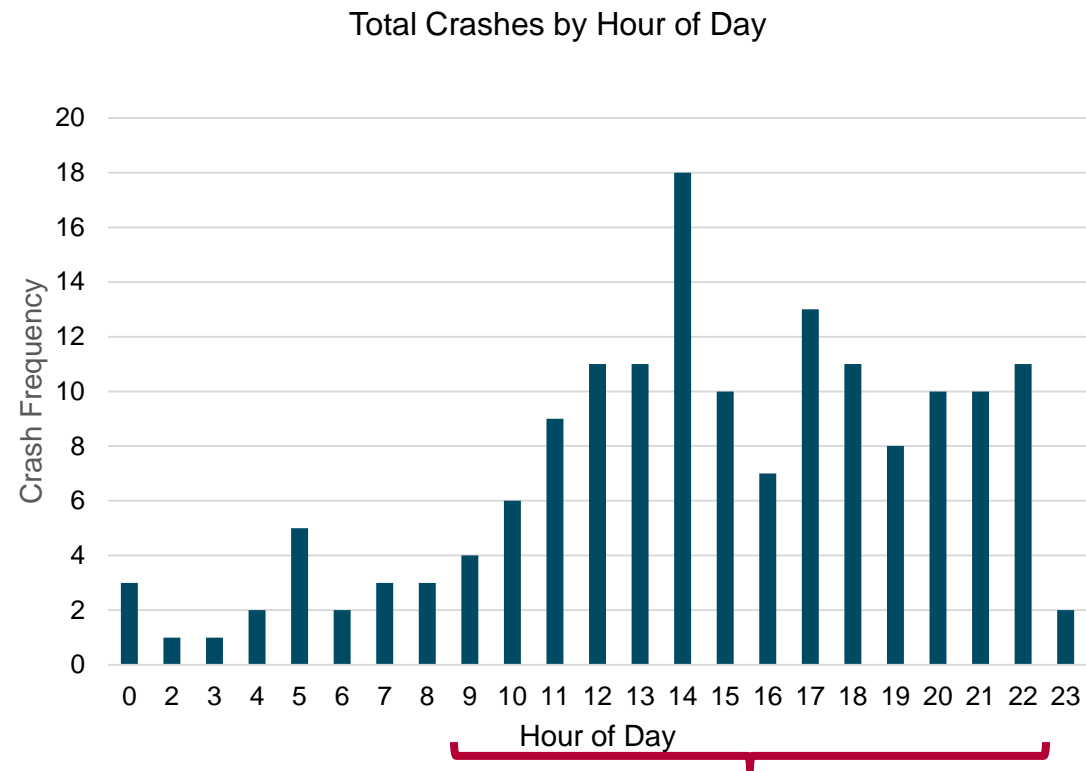


- **161 Total crashes**
- 42 injury crashes including **11 serious injury crashes**
- 119 property damage only crashes
- Crashes in **recent years remaining higher than average**
- 2 reported pedestrian crashes (1 serious injury)
- 2 reported pedalcycle crashes (both injury crashes)

# Crashes by Month & Day (2012-2022)



# Crashes by Hour



# Existing Conditions & Crash Data Summary

- Besides the existing bike lanes along SR-53, there are nearly no public pedestrian facilities within Catawba Island. This is the main pedestrian facility in the area.
- To use the facility, pedestrians must travel alongside 50 mph vehicular traffic
- “Narrow sidewalks, or those not separated from moving traffic by space or buffering elements result in poorer perceptions of safety for pedestrians”
  - AASHTO Guide for the Planning, Design, and Operation of Pedestrian Facilities
- “... it is generally preferable to select path alignments in independent rights-of-way”
  - ODOT Location and Design Manual
- Based on the 10-year crash data, the main public pedestrian facility has the highest risk of crashes during the time when most people would prefer to use it; during summer months, on weekends, within daylight hours.



## Next Steps

- Final data to be compiled by mid-November
- The Park District will meet with Catawba Township Trustees and County Engineer to review potential routes and discuss factors related to on-road trail improvements
- Draft Master Plan will be completed with ODOT review by mid-January
- Master Plan will include three alternatives
- Park Board will approve the Master Plan once completed
- Advisory Council will recommend the preferred route based on data from approved Master Plan
- Park Board to approve final trail route
- Land surveying and environmental assessment will commence



# QUESTIONS