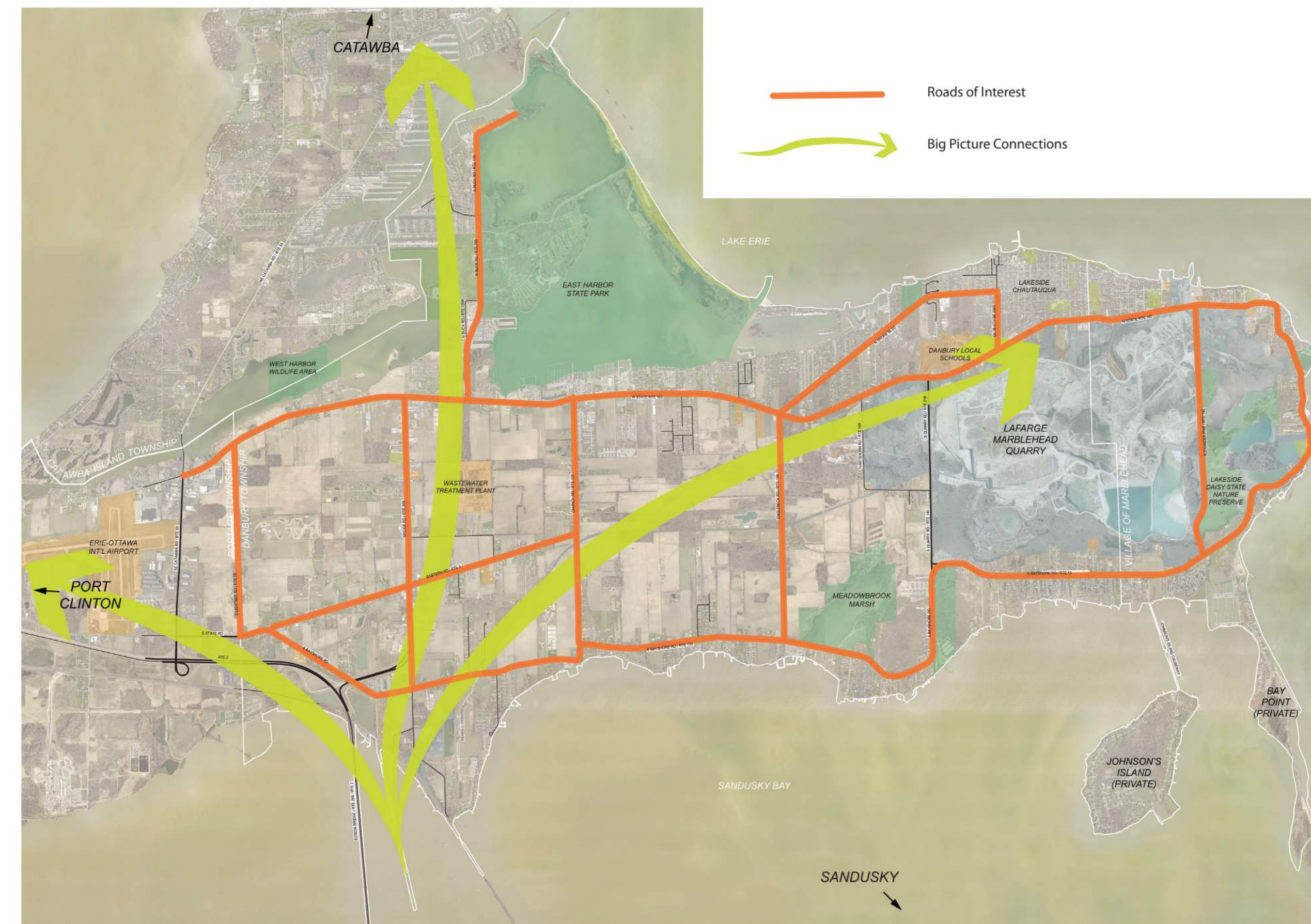
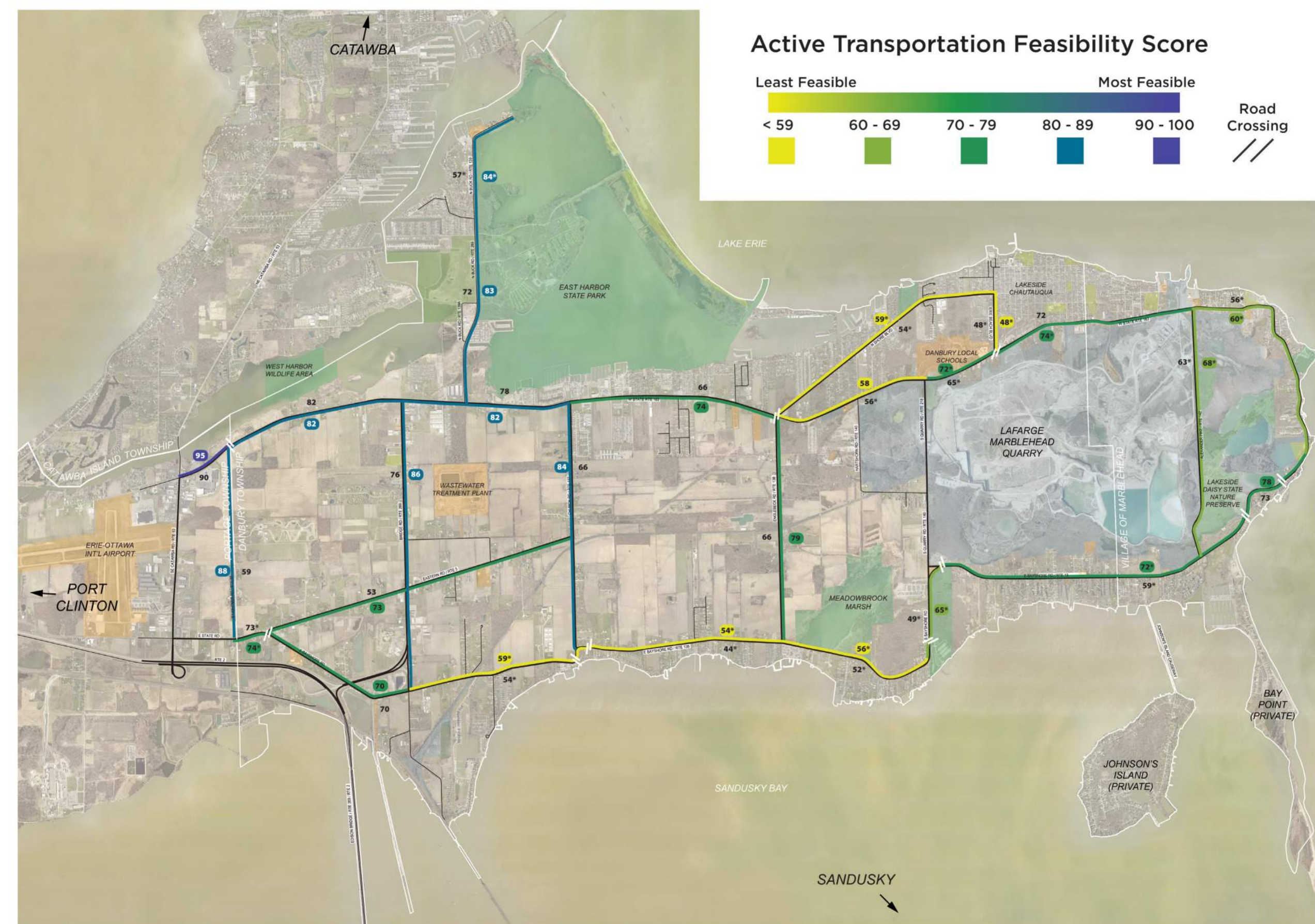


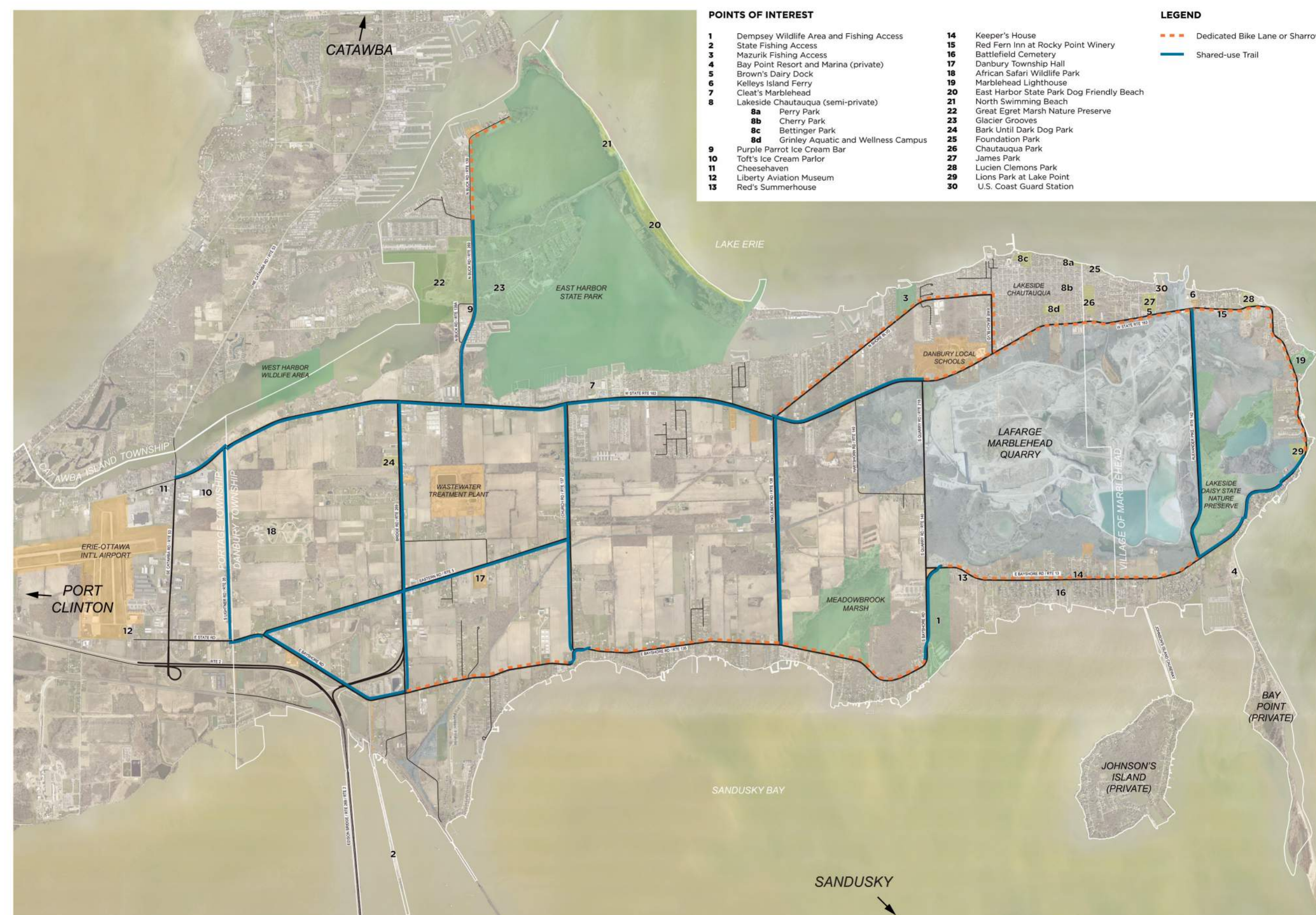
## 01 Evaluate existing active transportation plan + Identify points of interest & connection



## 02 Identify desired active transportation corridors



## 03 Evaluate corridors for shared use trail feasibility

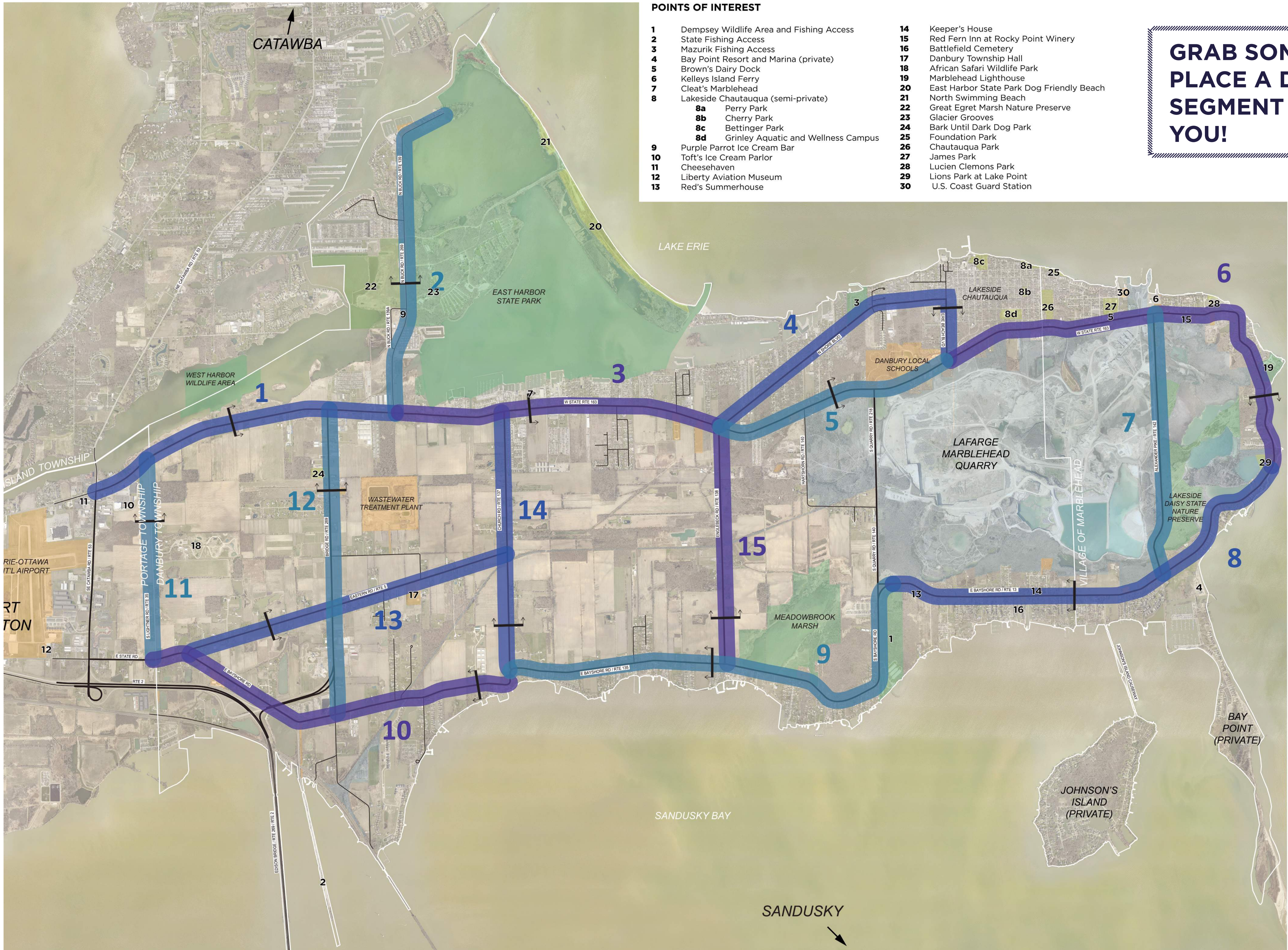


## 04 Create proposed active transportation plan

## COMMENT

Leave a Post-it!





POINTS OF INTEREST

- |    |  |    |   |
|----|--|----|---|
| 1  | Dempsey Wildlife Area and Fishing Access | 14 | Keeper's House                            |
| 2  | State Fishing Access                     | 15 | Red Fern Inn at Rocky Point Winery        |
| 3  | Mazurik Fishing Access                   | 16 | Battlefield Cemetery                      |
| 4  | Bay Point Resort and Marina (private)    | 17 | Danbury Township Hall                     |
| 5  | Brown's Dairy Dock                       | 18 | African Safari Wildlife Park              |
| 6  | Kelleys Island Ferry                     | 19 | Marblehead Lighthouse                     |
| 7  | Cleat's Marblehead                       | 20 | East Harbor State Park Dog Friendly Beach |
| 8  | Lakeside Chautauqua (semi-private)       | 21 | North Swimming Beach                      |
| 8a | Perry Park                               | 22 | Great Egret Marsh Nature Preserve         |
| 8b | Cherry Park                              | 23 | Glacier Grooves                           |
| 8c | Bettinger Park                           | 24 | Bark Until Dark Dog Park                  |
| 8d | Grinley Aquatic and Wellness Campus      | 25 | Foundation Park                           |
| 9  | Purple Parrot Ice Cream Bar              | 26 | Chautauqua Park                           |
| 10 | Toft's Ice Cream Parlor                  | 27 | James Park                                |
| 11 | Cheesehaven                              | 28 | Lucien Clemons Park                       |
| 12 | Liberty Aviation Museum                  | 29 | Lions Park at Lake Point                  |
| 13 | Red's Summerhouse                        | 30 | U.S. Coast Guard Station                  |

**GRAB SOME DOT STICKERS & PLACE A DOT ON THE TRAIL SEGMENT MOST IMPORTANT TO YOU!**

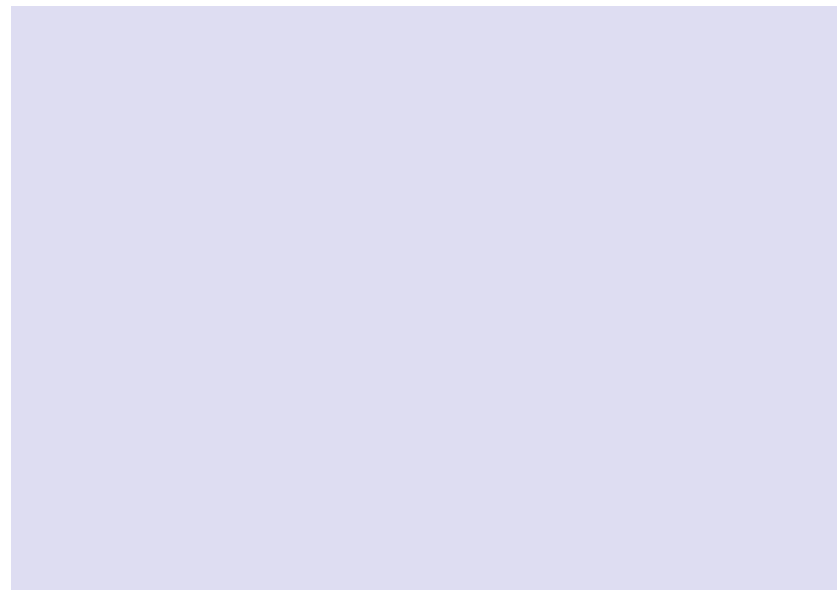
COMMENT

Leave a Post-it!

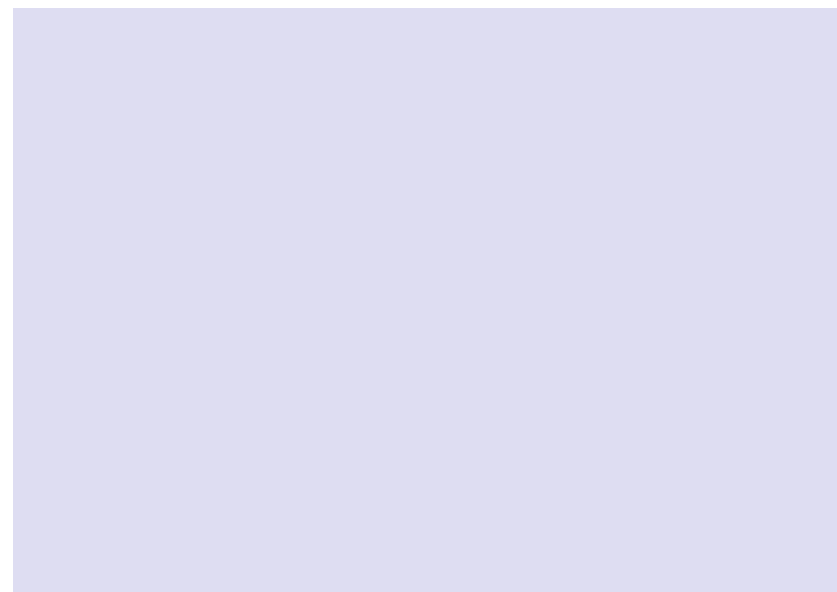


## HOW WOULD YOU LIKE TO USE A POTENTIAL ACTIVE TRANSPORTATION TRAIL NETWORK ON THE MARBLEHEAD PENINSULA?

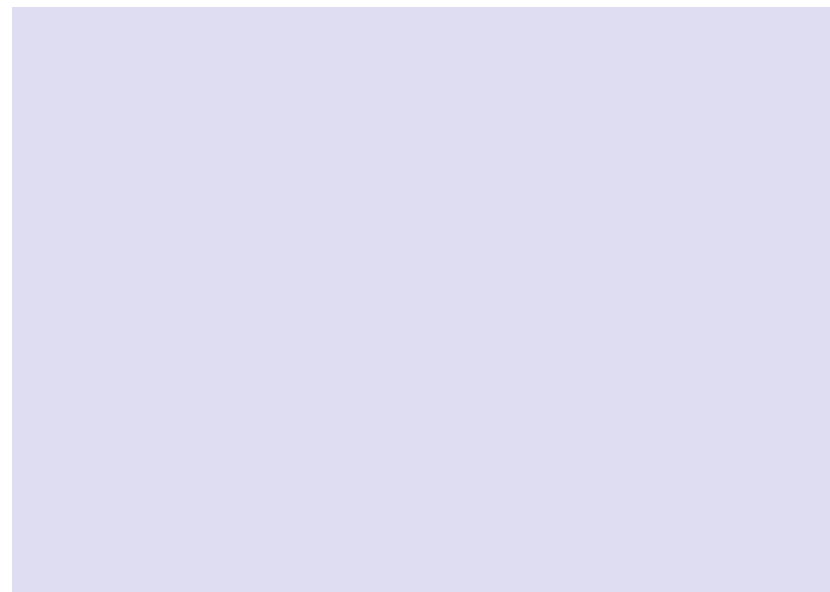
### ▶ TO ACCESS LOCAL DESTINATIONS & AMENITIES



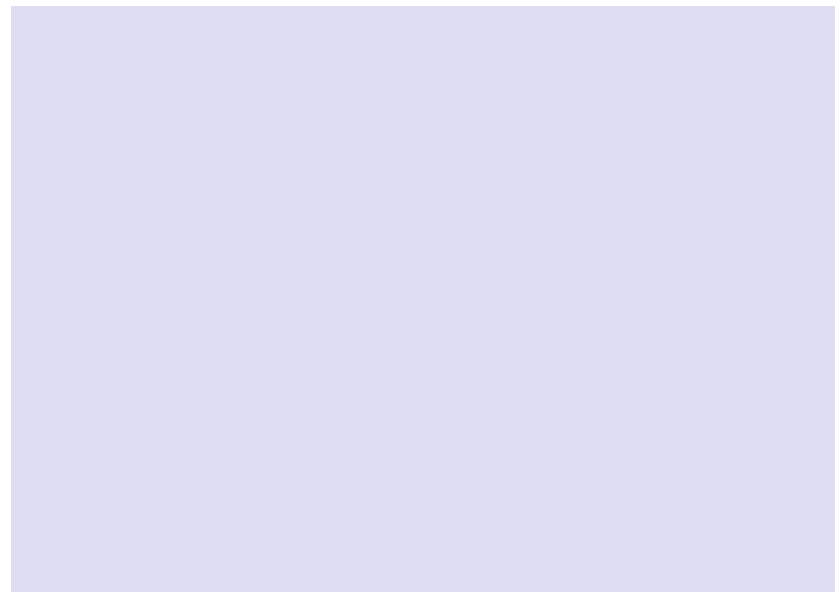
### ▶ TO EXPERIENCE NATURE



### ▶ TO LEISURELY RECREATE



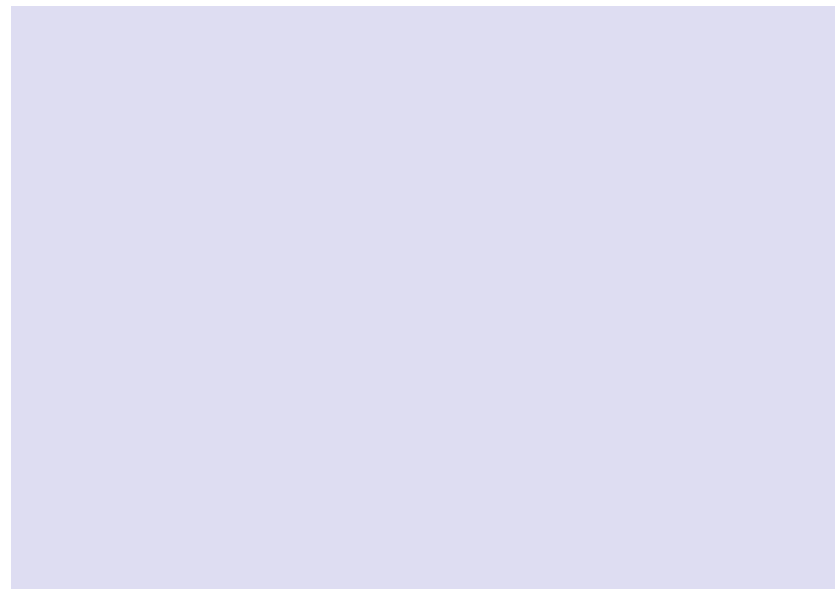
### ▶ WALK / BIKE TO SCHOOLS



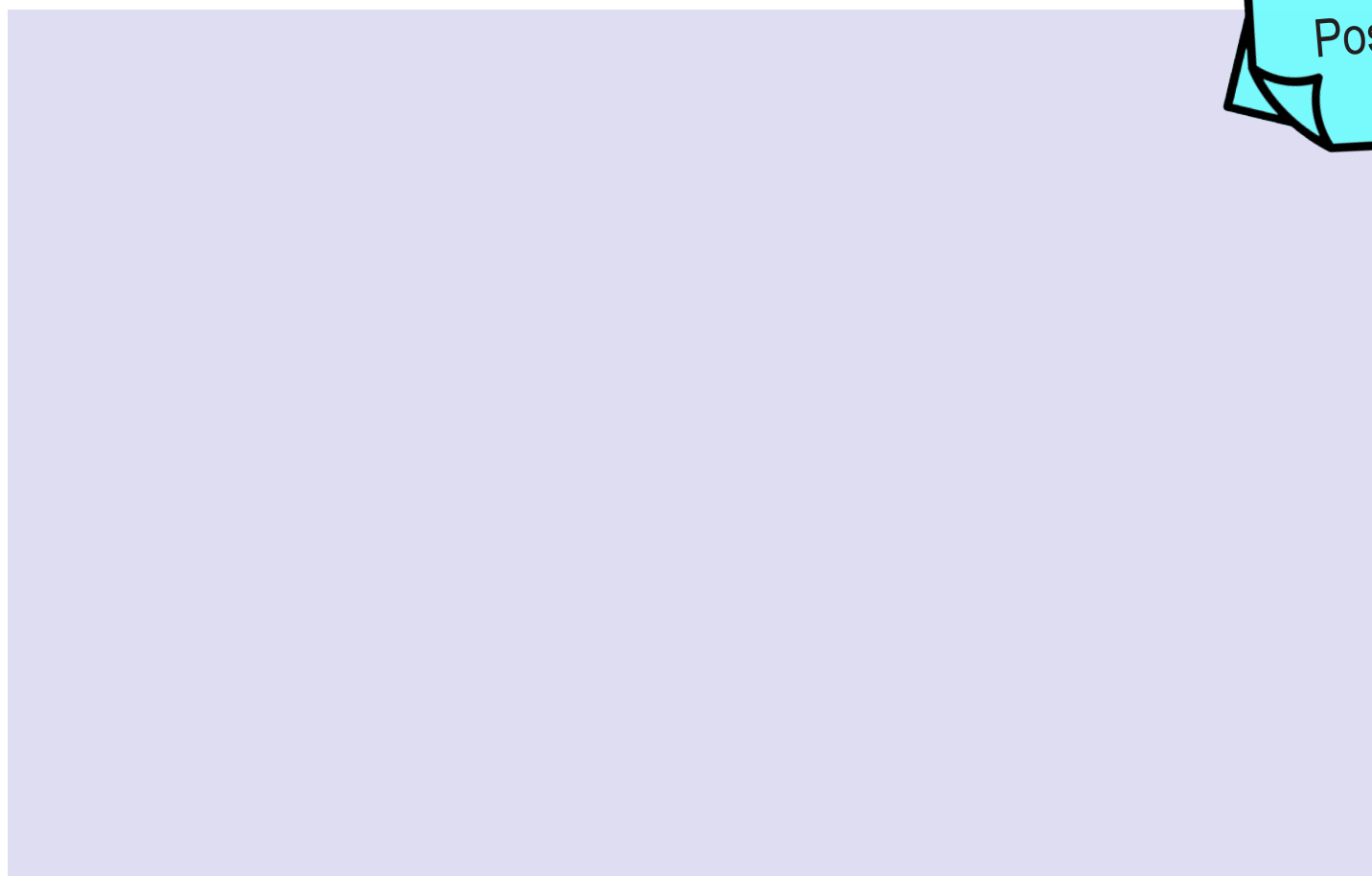
### ▶ DO NOT PLAN TO USE TRAIL



### ▶ TO EXERCISE

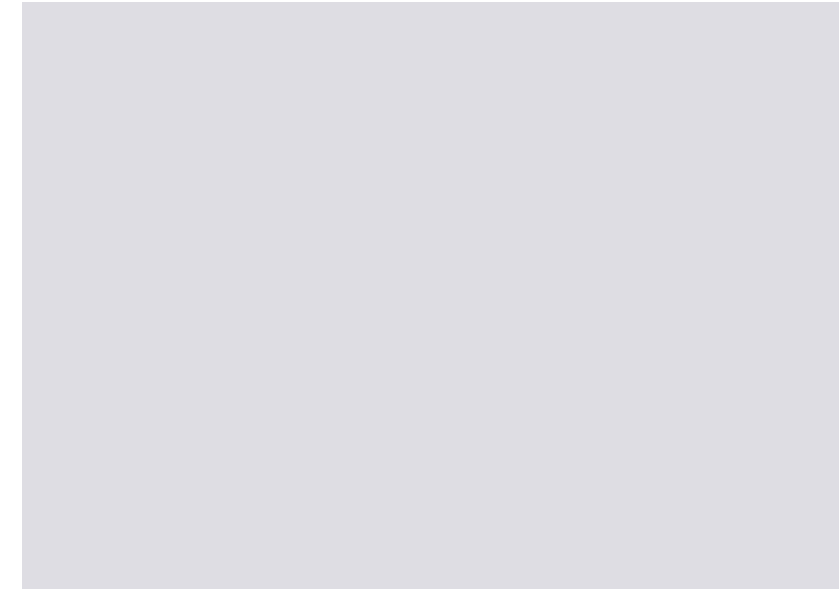


### ▶ OTHER

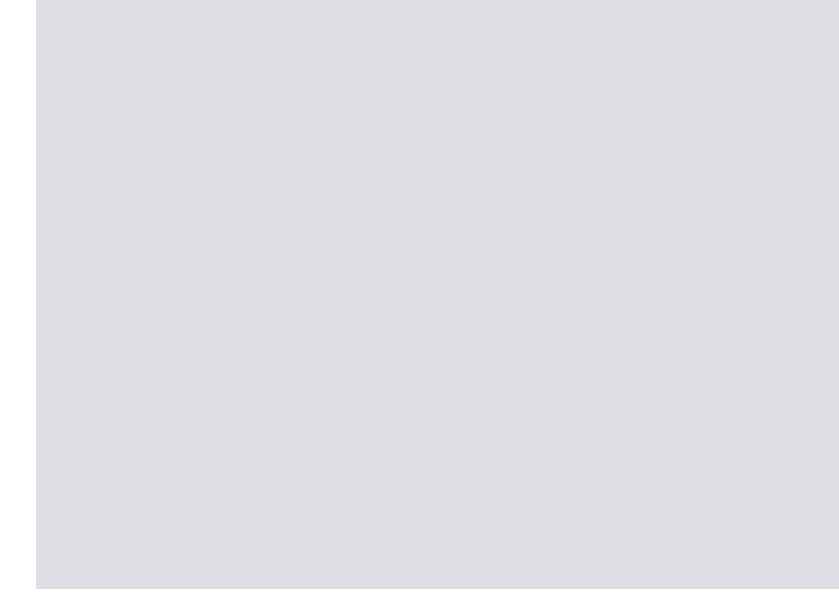


## WHAT ARE YOUR CONCERNS WITH A POTENTIAL ACTIVE TRANSPORTATION TRAIL NETWORK ON THE MARBLEHEAD PENINSULA?

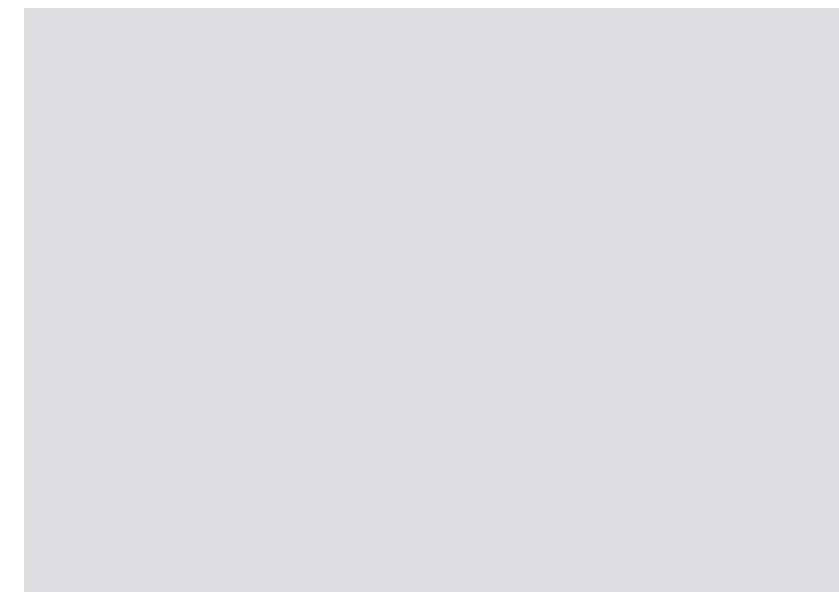
### ▶ SAFETY WITH ROADWAY CROSSINGS



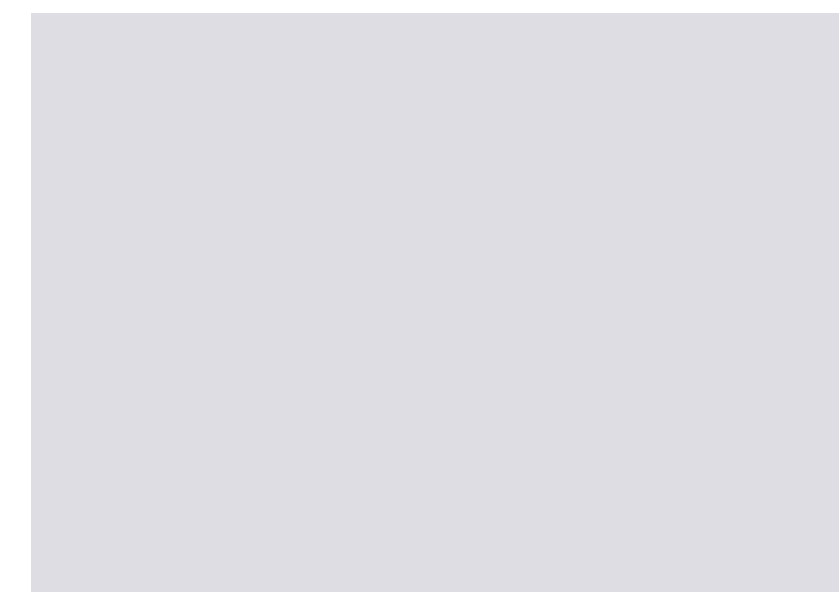
### ▶ PUBLIC ACCESS AT OR NEAR MY PROPERTY



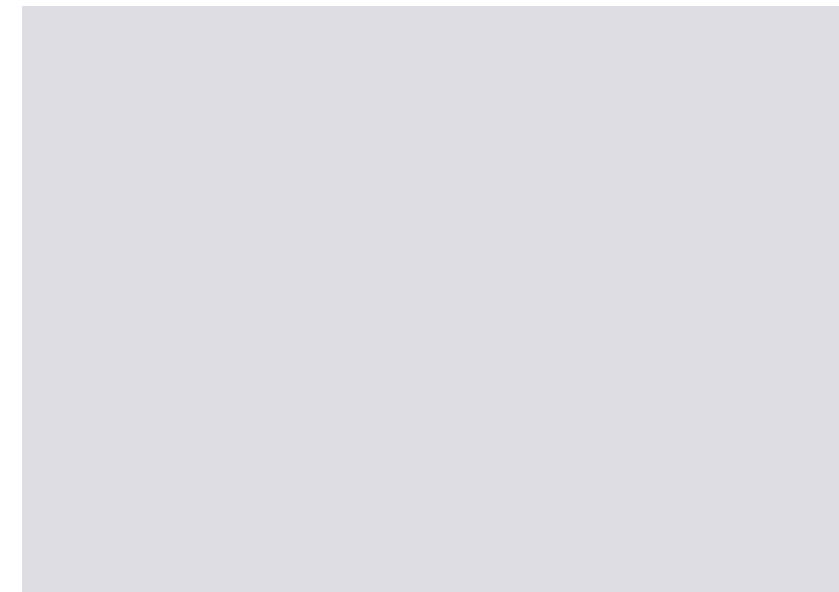
### ▶ VEHICULAR SPEED



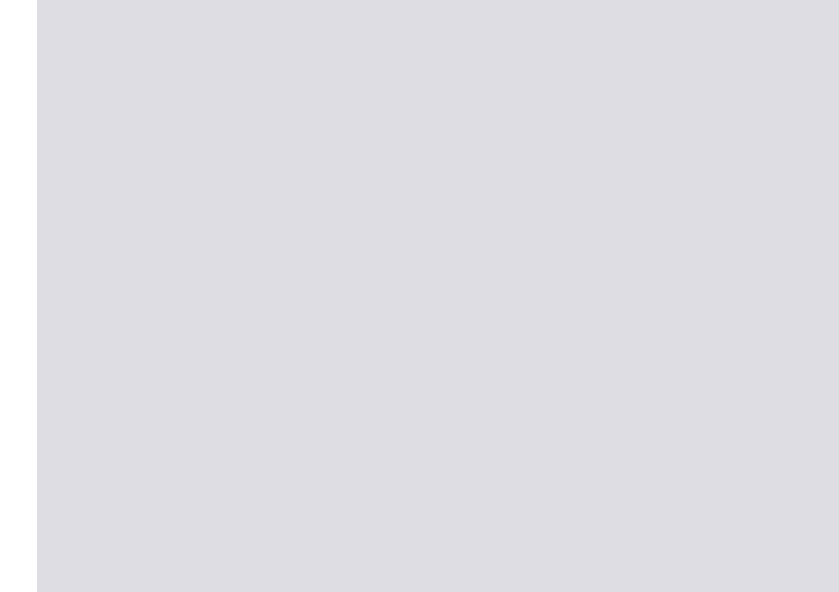
### ▶ INCREASING PROPERTY VALUES



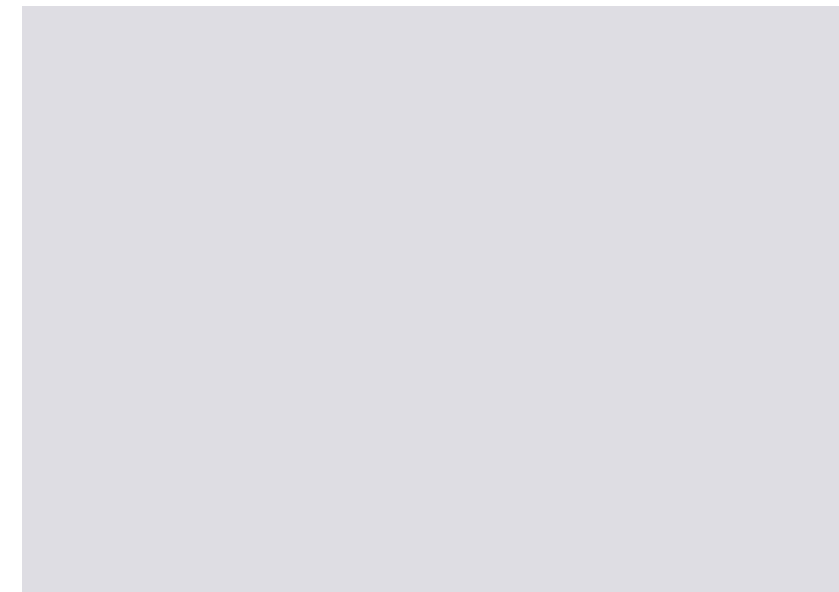
### ▶ LOCATIONS OF TRAILHEADS WITH VEHICULAR PARKING



### ▶ FUNDING AND MANAGEMENT



### ▶ POTENTIAL CHANGES TO THE CHARACTER OF MARBLEHEAD PENINSULA



### ▶ OTHER

